

**MAKE<sup>®</sup>**



# **MK618**

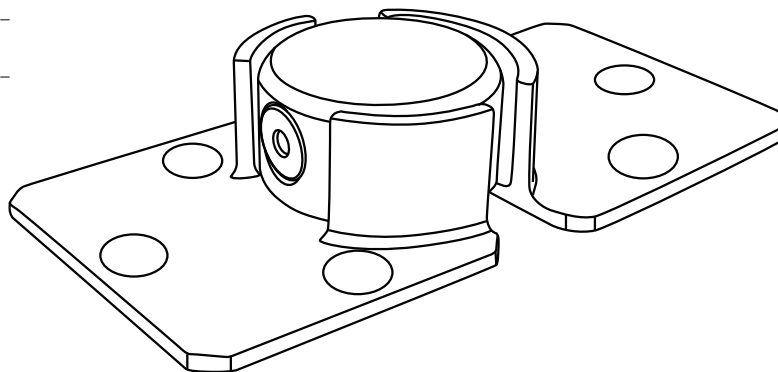
## **High Security Van Lock**

# Description

Item No : MK618

Material : Harden steel

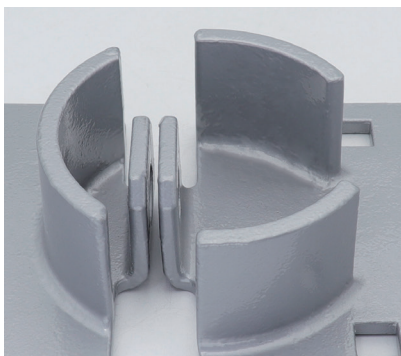
Finished : Satin chrome



## Features

- Durable material: harden steel
- Anti rust, waterproof
- Smart disc key system:  
with over 10,000 key combination

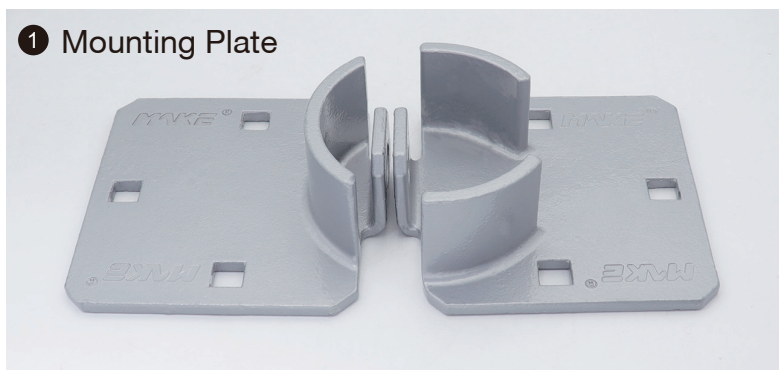
## Details





# Accessories

① Mounting Plate



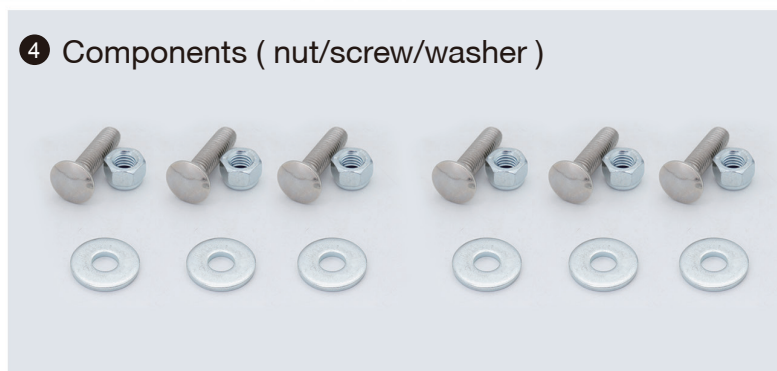
② Lock Cylinder



③ Key

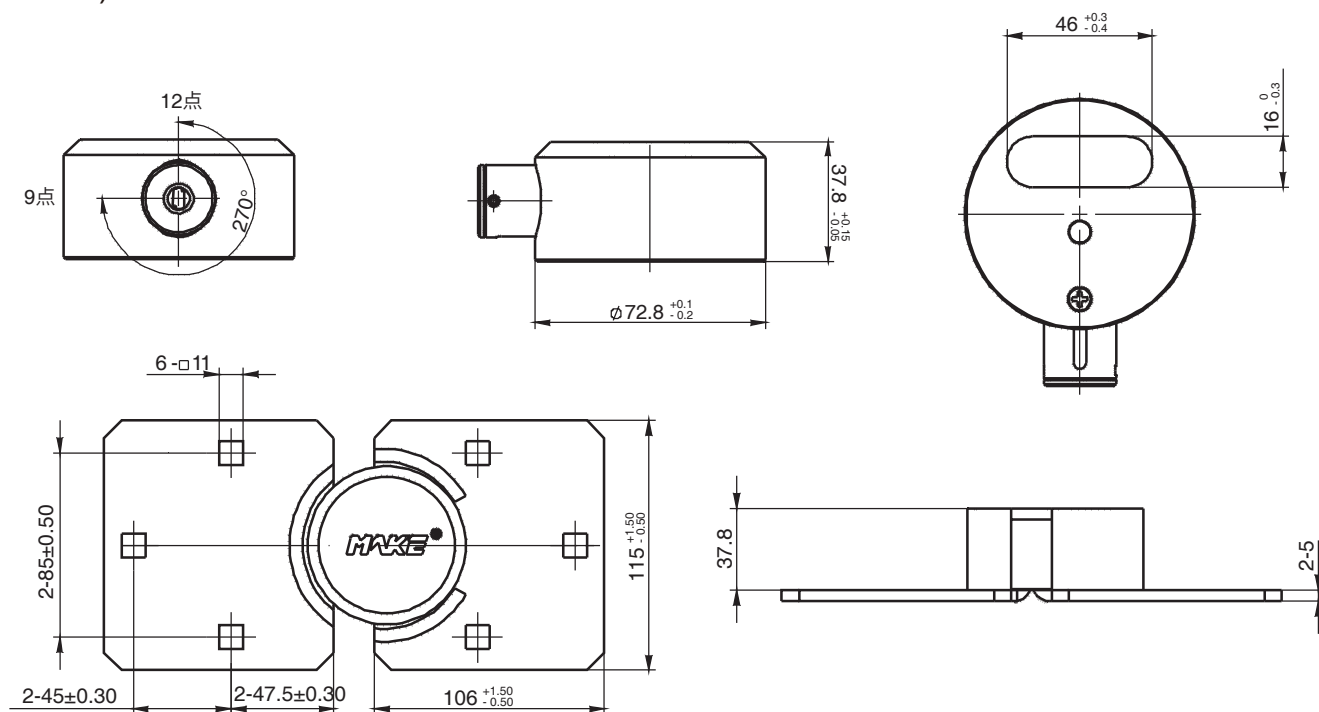


④ Components ( nut/screw/washer )



## Drawing

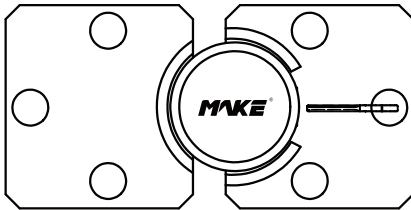
(Unit:mm)



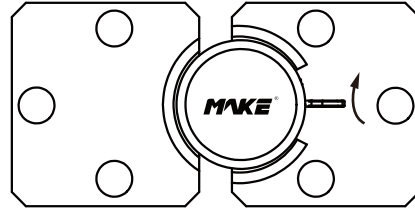
# Use Instructions

## How to unlock:

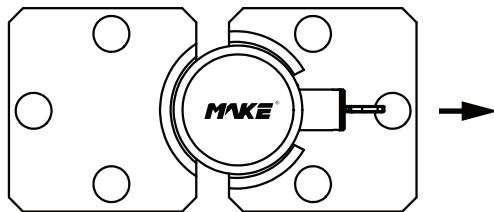
- ① Insert the key into cylinder



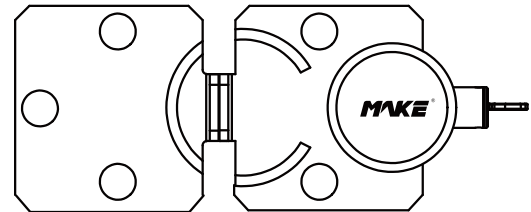
- ② Rotate key 270 degrees clockwise



- ③ Slide the cylinder out

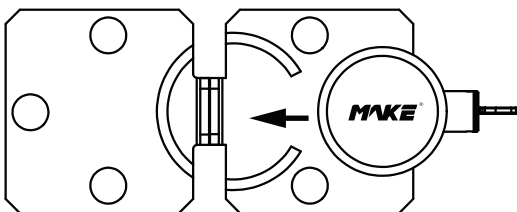


- ④ Remove the puck lock

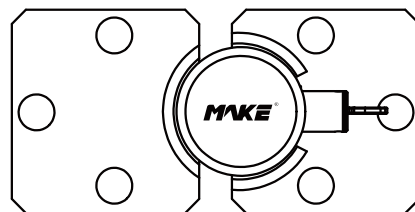


## How to lock:

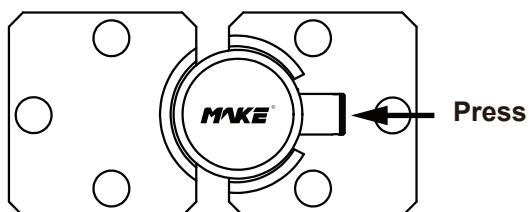
- ① Position puck lock into the hasp



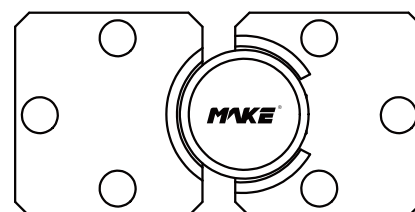
- ② Rotate key 270 degrees anticlockwise and remove the key



- ③ Press the cylinder to lock

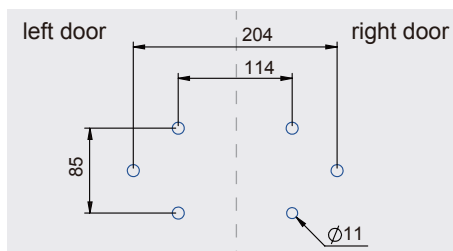


- ④ Locked successfully

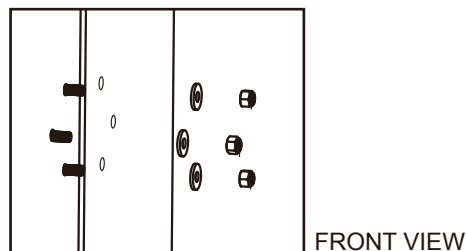


# Installation Instructions

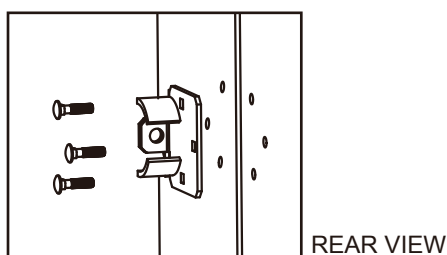
① Making the mounting holes as below:



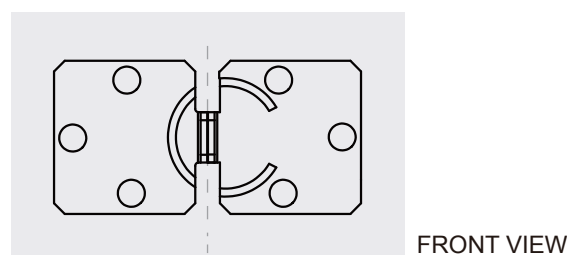
② Fix the right base into the door as below:



③ Turn the nut clockwise until locked tightly



④ Take the same as per ② ③ to fix the left base



## Packaging



1 Set



1 Set into box



7 Set into carton

Gross Weight : 2.8 kgs/box

Carton Size : 34.5 x 29 x 17.5cm

20.6 kgs/carton